



**A great European route for believers,
as well as, art and nature lovers**



English

www.rutamariana.com



La Ruta Mariana

The **Marian Route/Ruta Mariana** is a singular path. It's an itinerary that mixes culture and devotion, art and spirituality, nature and meditation. **El Pilar, Torreciudad, Montserrat, Lourdes** and **Meritxell** are brother sanctuaries. They offer to both, pilgrims and travelers, a different way to get closer to Virgin Mary by giving them unique artistic and monumental complexes. They are five of the most celebrated European sanctuaries that provide an unforgettable experience. These are some of the reasons why the Marian Route is visited just as much by the faithful, as it is visited by heritage lovers.



El Pilar

The basilica of 'El Pilar' stands on the right bank of river Ebro. It is one of the most important sanctuaries in the Catholic world. This huge urban shrine located in the downtown area of Zaragoza is a mandatory stop. The towers and domes that shape the exterior view make the basilica recognizable anywhere. The Virgin of the Pilar is venerated by millions of people each year.

THE FIRST MARIAN TEMPLE IN THE WORLD

According to a tradition, "on January 2nd in 40 AC, the Virgin Mary arrived in mortal flesh to Zaragoza"



This route is known in more than 150 countries and around 12 million people visit the five sanctuaries all together. This is the result of its cultural, religious and tourist importance



Type of sanctuary: urban shrine, Aragonese baroque – **Location:** Zaragoza (Spain). **No entrance fee**
Opening hours: from 6.45 to 20.30 h. (monday-saturdays) and from 6.45 to 21.30 h. (sundays)
Dedicated to: Our Lady of "El Pilar" – **Contact:** cabildo@cabildodezaragoza.org – Tel. (+34) 976 29 95 64

Torreciudad

The Sanctuary of Torreciudad is located near the town of Barbastro, in the Huesca province. It belongs to the Aragonese 'Ribagorza' county, but also it is located very close to other two important counties: 'Somontano' and 'Sobrarbe'. This modern shrine is a meeting point for many groups and families. It's one of the most visited places in the Aragonese Pre-Pyrenees.

THE INNER RENEWAL JOY

In Torreciudad and for over 10 centuries, pilgrims are filled with joy in presence of Virgin Mary



Type of sanctuary: mountain shrine, contemporary religious architecture - **Location:** Torreciudad - Huesca (Spain). **No entrance fee**
Opening hours: July to Aug, 10am-8:30pm - May to Oct., 10am-7:30pm -Nov. to April, Saturdays and Sundays, 10am-7pm - from Monday to Friday, 10am-2pm and 4pm-6pm - **Dedicated to:** Our Lady of Torreciudad - **Contact:** info@torreciudad.org - Tel. (+34) 974 30 40 25 - www.torreciudad.org

Lourdes

The Sanctuary of Lourdes is a cosmopolitan place, a universal sanctuary which strength comes from the diversity of its people. It is considered the first pilgrimage Marian destination in the world. Every year, more than 6 million people arrive to this place looking for relief and hope.

THE SIGNS OF LOURDES

The Water, symbol of purification; the Rock, the place of the apparitions; the Light means faith and hope



Type of sanctuary: mountain/urban shrine, religious architecture late 19th century. **Location:** Lourdes (France) - **No entrance fee**
Opening hours: from 5:30am to 00:00pm - **Dedicated to:** Our Lady of Lourdes
Contact: saccueil@lourdes-france.com - Tel. (00) (+33) 5 62 42 20 08 - www.lourdes-france.org

The Marian Route stages

Although there are different ways of traveling around the Marian Route's lands, here you can see the main stages to go from one sanctuary to the next one, and furthermore, to visit the beautiful regions, cities, villages and their attractions. The beginning and the end of each stage can be swapped.

EL PILAR-TORRECIUDAD

Between Aragonese sanctuaries

Distance: 150 km.

Estimation time: 1'40 h.

Recommended itinerary:

Zaragoza-Huesca-Barbastro-Torreciudad

EL PILAR-LOURDES (by Jaca)

Through the Aragonese Pyrenees

Distance: 260 km.

Estimation time: 3'40 h.

Recommended itinerary:

Zaragoza-Huesca-Jaca-Canfranc-Somport-Lourdes

TORRECIUDAD-LOURDES

Discovering the origins

Distance: 200 km.

Estimation time: 3 h.

Recommended itinerary:

Torreciudad-Ainsa-Bielsa/Aragnouet-Tarbes-Lourdes

LOURDES-MERITXELL

Brother sanctuaries

Distance: 270 km.

Estimation time: 3'45 h.

Recommended itinerary:

Lourdes-Tarbes-Capvern-Foix-Pas de la Casa-Meritxell

MERITXELL-MONTSERRAT

The sweet 'M' stage

Distance: 170 km.

Estimation time: 2'35 h.

Recommended itinerary:

Andorra la Vella-La Seu d'Urgell-Berga-Montserrat

MONTSERRAT-EL PILAR

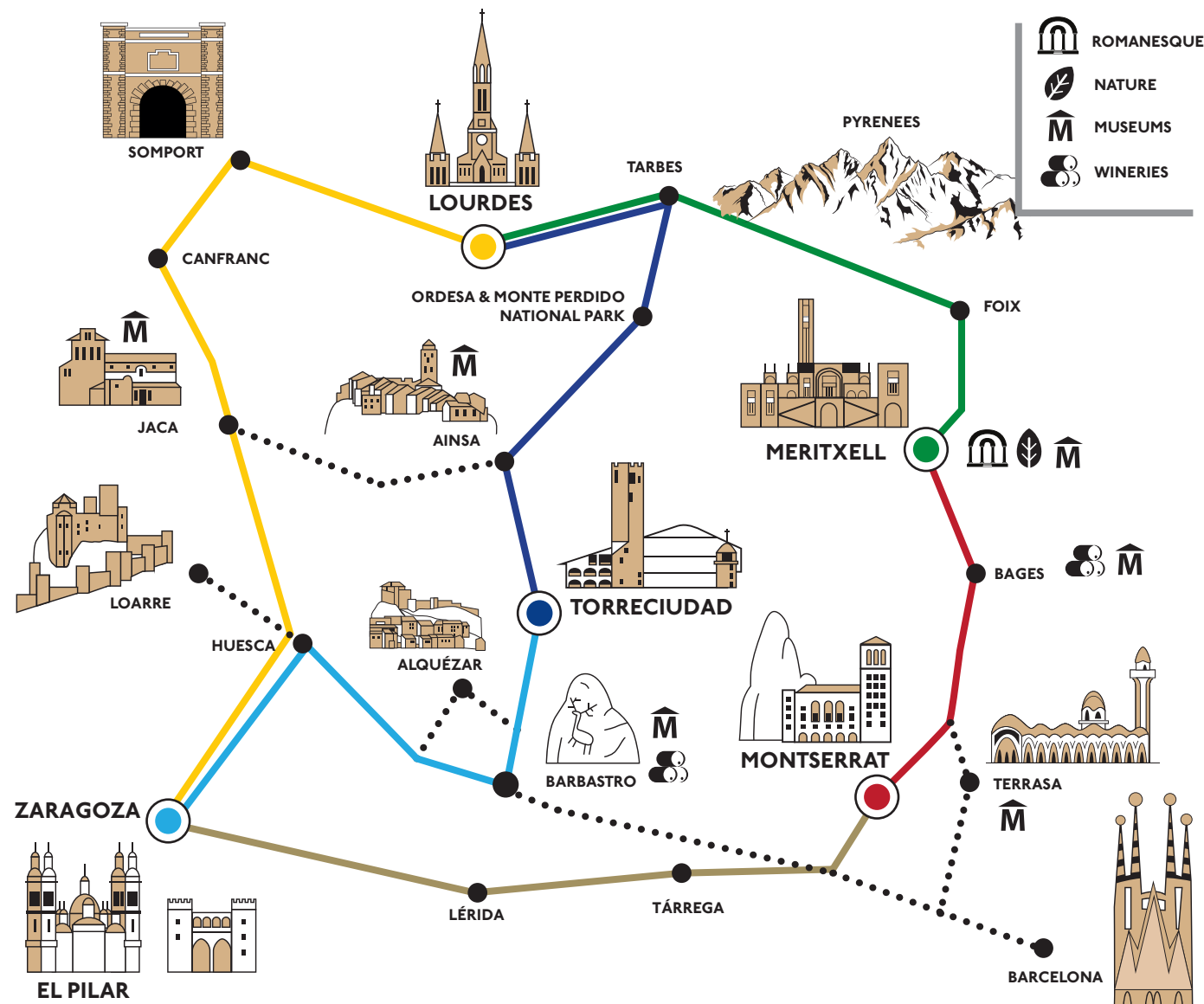
By the river Ebro's lands

Distance: 265 km.

Estimation time: 2'45 h.

Recommended itinerary:

Montserrat-Tárrega-Lérida-Zaragoza



Montserrat

The Sanctuary of Montserrat is nestled in the middle of the most emblematic mountain in Catalonia, just 60 km. from Barcelona. The existing devotion for Virgin of Montserrat, together with the singularity of the surrounding area and the cultural importance of the monastery make Montserrat a different place. It's a place conceived for everyone wanting to visit it.

SANCTUARY, MONASTERY AND MOUNTAIN

Montserrat is not only a sanctuary, it's a monastery with a thousand years of history and a Natural Parc



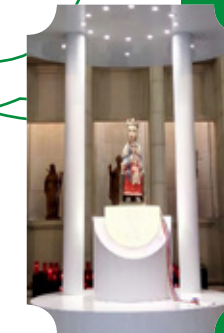
Type of sanctuary: mountain shrine – **Location:** Montserrat, Barcelona (Spain)
Opening hours: from 7:30am to 8pm – **Dedicated to:** Our Lady of Montserrat
Contact: informacio@larsa-montserrat.com – Tel. (+34) 93 877 77 77 – www.abadiamontserrat.net – www.montserratvisita.com

Meritxell

In the Principality of Andorra, surrounded by privileged scenery and enclosed in a landscape of great natural beauty, the sanctuary of Meritxell emerges as a symbol of passion of a whole nation. The pope Francis granted the church the title of Minor Basilica in honour of its singular liturgical life, its religious work and its history and cultural activity. The complex is one of the most visited places in Andorra.

THE HISTORICAL COMPLEX OF MERITXELL

The Historical Complex of Meritxell (the old and the new sanctuary), declared Buildings of Cultural Interest



Type of sanctuary: mountain shrine, Andorran religious architecture late 20th century – **Location:** Canillo (Principality of Andorra)– **No entrance fee**
Opening hours: Wednesdays to Mondays, from 9am to 1pm and 3pm to 7 pm – **Dedicated to:** Our Lady of Meritxell
Contact: pastoral@santuariodemeritxell.com – Tel. (+00) 376 851 253 – www.santuariodemeritxell.com

Not to be missed in the Marian Route

(what to visit)

Going across the Marian Route allows the visitor, in addition to a great experience through five important European Marian sanctuaries, to discover a territory with a rich artistic, cultural and natural heritage. The different attractions than can be found are cathedrals,

castles, monasteries, churches, parks, landscapes & amazing sceneries, gastronomy, wineries or museums among others. All together makes this route a global destination with a high tourist and cultural value. Do not miss the opportunity to visit places like these:

ZARAGOZA

Aljafería Palace • Paintings of Goya • San Salvador Cathedral • The Roman ‘Caesaraugusta’



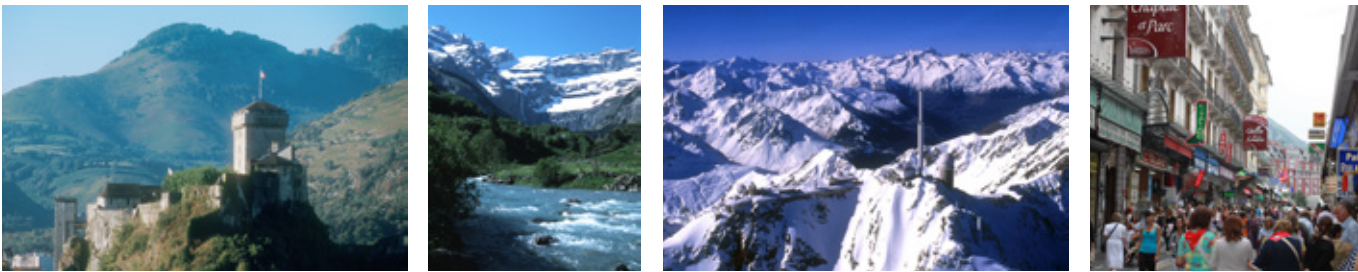
TORRECIUDAD

Loarre castle • Barbastro, Alquézar & Somontano • Graus & Ribagorza • Aínsa & Sobrarbe • Ordesa and Monte Perdido National Park



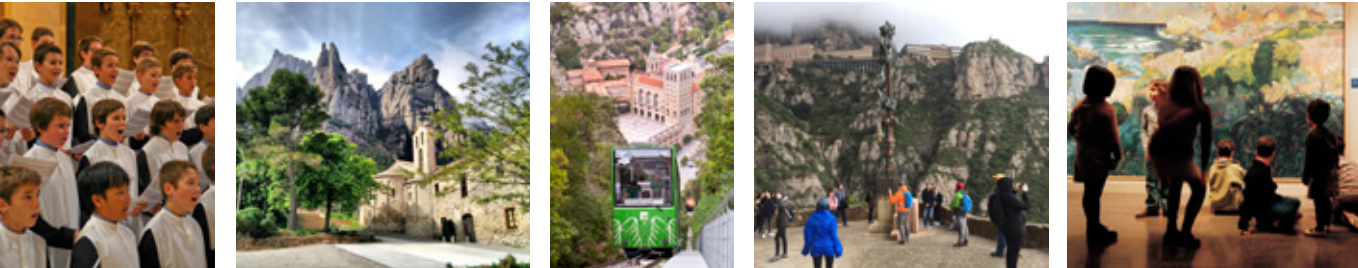
LOURDES

The Castle • Pic du Jer • French Pyrenees National Park • The Bhétarram Coves



MONTSERRAT

The Boys’ Choir • Montserrat Natural Park • The Funiculars • Surrounding itineraries • The Museum



ANDORRA

Andorran Romanesque art • ‘Romanesque mapping’ of Santa Coloma • Casa de la Vall • Landscape and nature • Leisure and relax





Information Office
Tel. (+34) 976 79 42 25
info@rutamariana.com
www.rutamariana.com

